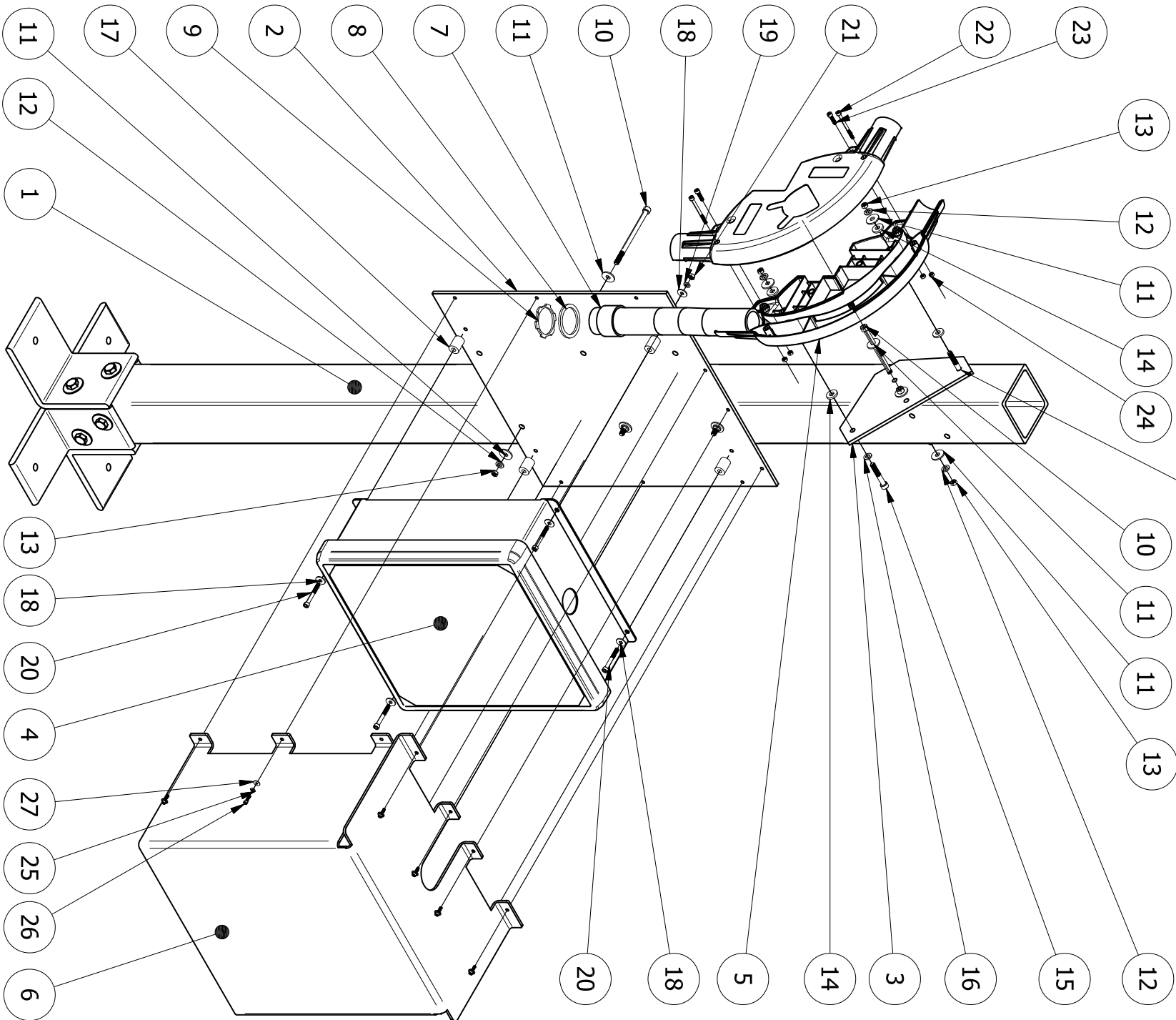




PARTS LIST				
ITEM	QTY	PART DESCRIPTION	ITEM	QTY
1	1	PEDESTAL COLUMN #045229A	16	2
2	1	PANEL - PART # 045231	17	4
3	1	TOP BRACKET - PART # 045839	18	8
4	1	COMPENSATION MODULE	19	4
5	1	LKCO HEAD CORNER ASSEMBLY	20	4
6	1	COVER - PART #045232	21	4
7	1	THREADED CONDUIT ADAPTER - 1.5" MALE	22	2
8	1	WASHER - SEAL 1.5"	23	2
9	1	LOCK NUT - 1.5"	24	4
10	5	SCREW - SHCS M8X130	25	10
11	12	WASHER - FENDER M8 IN X 24MM	26	10
12	7	WASHER - SPLIT M8	27	10
13	7	NUT - M8		
14	4	WASHER - RUBBER 0.355 ID 0.813 OD		
15	2	SCREW - SHCS-M8X50		

FIELD MODIFICATION - NOTE 3



- 1- ANCHOR COLUMN TO GROUND. PLEASE REFER TO DRAWING 02B109298 FOR BASE HOLE-PATTERN, ORIENTATION, AND LOCATION OF PEDESTAL IN RELATION TO BUS BAR.
- 2- ATTACH MOUNTING PANEL (2) TO COLUMN AS SHOWN USING M8 BOLTS, WASHERS AND NUTS (10, 11, 12, 13). NOTE THE ORIENTATION OF THE PANEL - THE M4 HOLES IN THE PANEL SHOULD BE LOCATED ON TOP AND SIDES, BUT NOT BOTTOM. PANEL IS OFFSET TO THE LEFT OF THE COLUMN.
- 3- TEMPORARILY ASSEMBLE THE TOP BRACKET TO THE COLUMN USING M8 BOLTS AND NUTS (10, 13). NOTE THE ORIENTATION OF THE BRACKET AND MOUNTING HOLES USED (1st AND 3rd HOLES FROM THE BOTTOM OF THE BRACKET), USING THE TOP LEFT CORNER HOLE ON THE BRACKET, AS A REFERENCE, DRILL SMALL HOLE HORIZONTALLY THE ROUGH THE FRONT AND BACK SIDES OF THE COLUMN. REMOVE THE TOP BRACKET AND ENLARGE THE HOLE ON THE COLUMN TO 17MM. THIS HOLE WILL BE THE CLEARANCE FOR THE TOP CORNER ASSEMBLY HOLE. TEMPORARILY ASSEMBLE M8x50BOLT, WASHER, RUBBER WASHER AND NUT (14, 15, 16, 13) ON THE TOP HOLE OF THE BRACKET. REASSEMBLE TOP BRACKET (3) TO COLUMN AS SHOWN, USING M8 BOLTS, WASHERS AND NUTS (10, 11, 12, 13).
- 4- ATTACH COMPENSATION BOX (4) TO BACK PANEL USING SPACERS (17), AND M6 BOLTS, WASHERS, AND NUTS (18, 19, 20, 21).
- 5- APPLY A THIN COATING OF RTV TO THE RUBBER WASHERS AND ATTACH THE CORNER TO THE UPPER BRACKET USING THE M8x50 SCREWS, RUBBER WASHER, STEEL WASHER AND NUT (15, 16, 14, 14, 11, 12, 13) IN THE ORDER SHOWN ON DRAWING. TIGHTEN THE NUT UNTIL THE RUBBER WASHER IS COMPRESSED SLIGHTLY. DO NOT OVER TIGHTEN AS IT WILL DAMAGE THE PLASTIC CORNER. TO PREVENT LOOSENING OVER TIME, USE OF LIGHT DUTY THREAD-LOCK IS RECOMMENDED.
- 6- ATTACH THE THREADED CONDUIT COUPLING (7) AND RUBBER SEALING WASHER (8) TO THE COMPENSATION BOX USING THE LOCK NUT (9). THE LOCK NUT IS INSTALLED INSIDE THE COMPENSATION BOX. TIGHTEN THE LOCK NUT SUCH THAT THE SEALING WASHER IS COMPRESSED IN HALF.
- 7- ATTACH LKCO CORNER COVER USING M5 SCREWS, AND NUTS (22, 23, 24). ONCE THE SENSOR ROUTING IS COMPLETE. SEAL THE EDGES OF THE CORNER ASSEMBLY WITH WEATHER PROOF RTV AND REATTACH. SEAL THE OPENING OF THE LARGER CORNER MOUNTING HOLES (M8) AS WELL TO PREVENT WATER INGRESS INTO COMPENSATION MODULE.
- 8- ONCE THE WIRING AND SENSOR INSTALLATION IS COMPLETE, ATTACH THE COVER (6) TO THE BACK PANEL USING M4 SCREWS, CURVED WASHERS, AND FLAT WASHERS (25, 26, 27).

SYM.	REVISION			DRN./DATE	CK'S/DATE	THIS DRAWING AND ALL INFORMATION CONTAINED HEREIN, IS THE PROPERTY OF DYNAMP LLC, AND MAY NOT BE COPIED, REPRODUCED NOR DIVULGED TO UNAUTHORIZED PERSONS WITHOUT THE EXPRESS WRITTEN CONSENT OF Dynamp LLC. IT IS PROVIDED SOLELY FOR THE CONVENIENCE OF THE USER AND SHALL BE RETURNED UPON REQUEST.									
A	ECR-1758: AS BUILT; CORRECTED BALLOON NUMBERS AND QUANTITIES.			FEM/8-28-12	DE08-28-12	B/M NO./REF. O45807	<div><div>THIRD ANGLE PROJECTION</div><div></div></div>		DO NOT SCALE PRINT TOL. UNLESS OTHERWISE NOTED: DEC. ±.015 FRACTIONAL ±.015 ANG. ±1°			<div><div><div>Dynamp, LLC</div><div>GROVE CITY, OHIO</div></div></div>			
B	ROTATED COMPENSATION BOX ORIENTATION BY 90 DEGREES (PER CUSTOMER REQUEST)			FEM/6-13-13	DE06-27-13	FINISH	DRN./DATE FEM 8-02-12		SCALE NA		TITLE ASSEMBLY – NEGATIVE BAR LKCO COMPENSATION BOX PEDESTAL		JOB SOR 6718 EMAL 2 PROJ.	DWG. NO. 82B109296	REV. B
							CR'D DATE DLO 8-14-12		APV./DATE RJM 8-14-12						
						MAT'L									